

RFID/UHF ANTENNA

Model : TH-915EA



1. GENERAL DESCRIPTION

Model No
TH915E-SMA90(M)

Below is a table summarizing the antenna design specification.

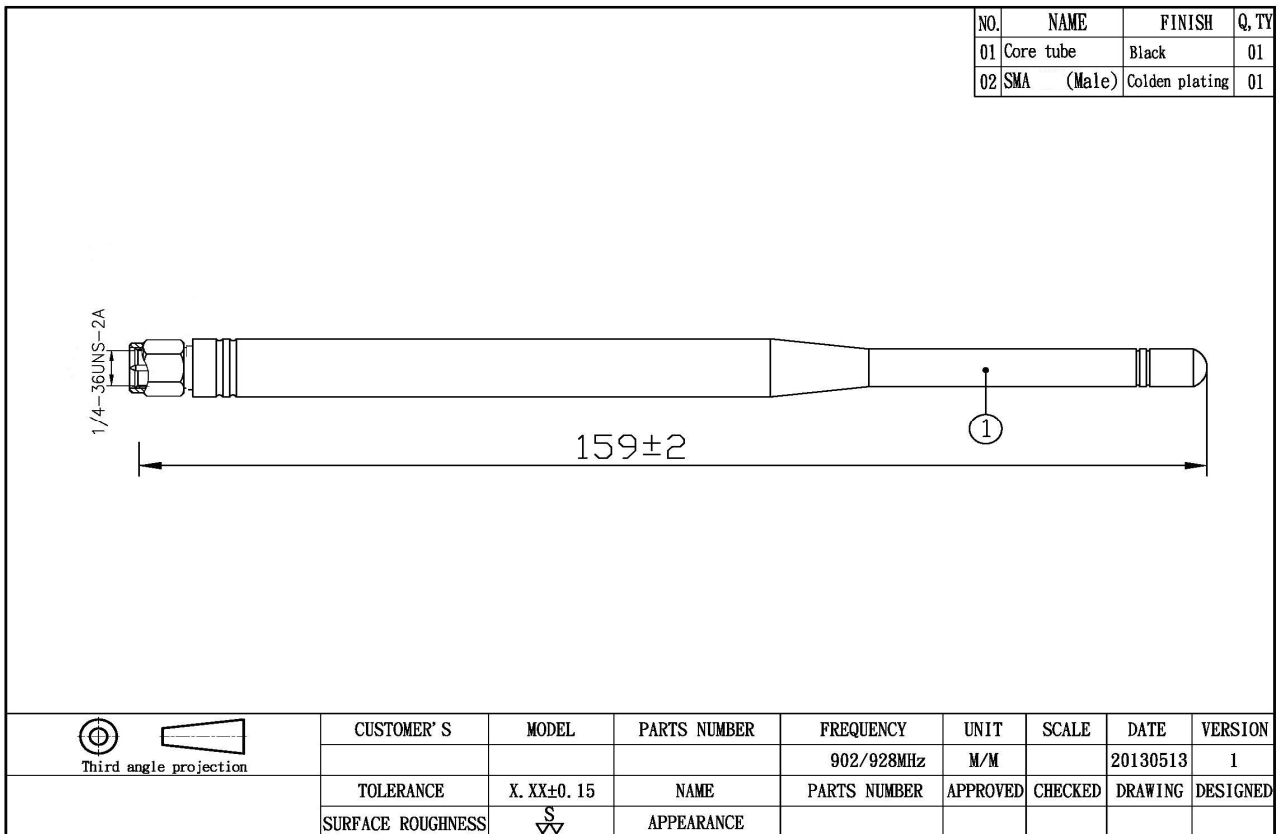
1.1 Electrical Properties

Parameter	Description
Frequency Band	902~928MHz
Nominal Impedance	50 ohm
V.S.W.R	2.0 : 1
Note: Gain includes the cable loss	

1.2 Mechanical Properties

Parameter	Description
Antenna Type	External Antenna
Touch Type	Screw Type
Connector Type	SMA (Male)
Antenna Dimensions	159mm \pm 2
Antenna Color	Black
Operating Temperature Range	-20°C~+60°C
Storage Temperature Range	-30°C~+70°C

2. Appearance



3. Return Loss, V.S.W.R. and Smith Chart

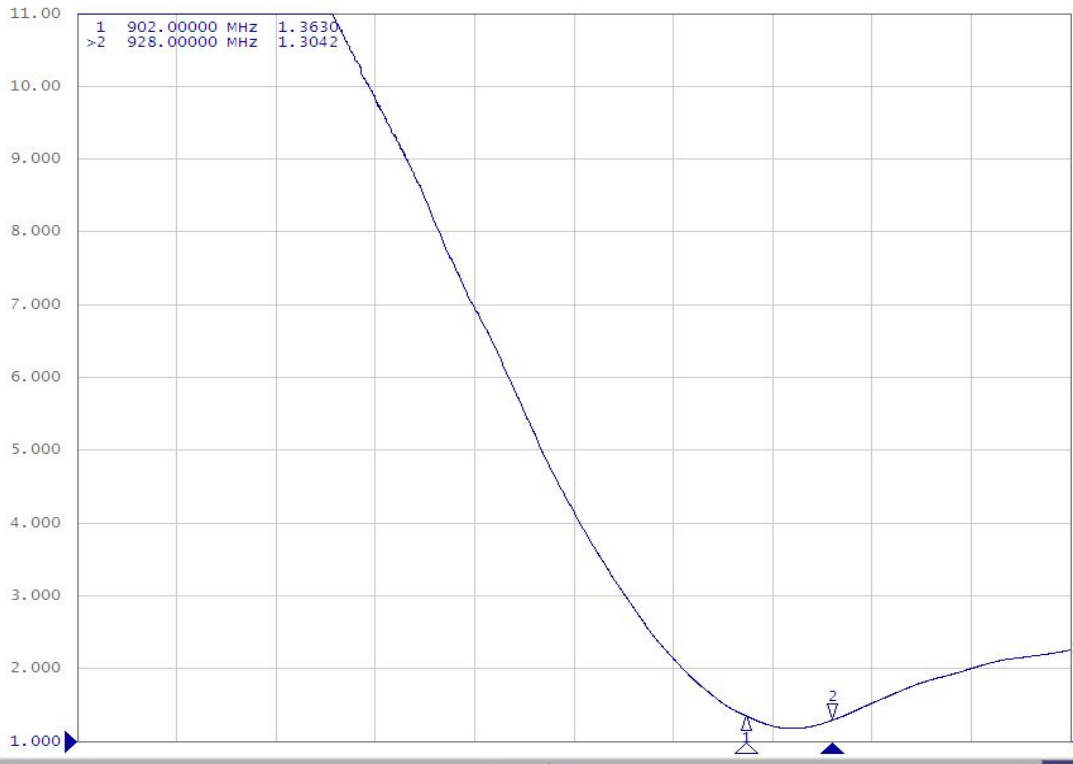


E5071C Network Analyzer

1 Active Ch/Trace 2 Response 3 Stimulus 4 Mkr/Analysis 5 Instr State

Resize

Tr1 S11 SWR 1.000/ Ref 1.000 [F1]



1 Start 700 MHz IFBW 70 kHz Stop 1 GHz

Meas Stop ExtRef Svc 2013-05-13 10:56

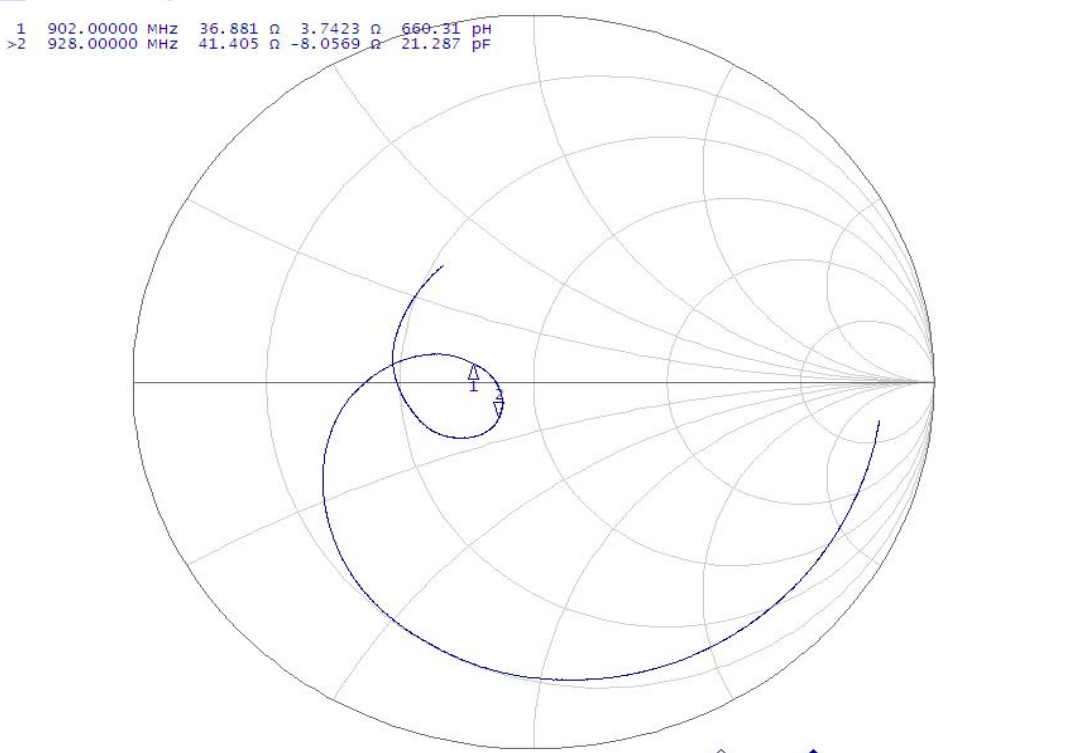
- Format
- SWR
- Log Mag
- Phase
- Group Delay
- Smith
- Polar
- Lin Mag
- SWR
- Real
- Imaginary
- Expand Phase
- Positive Phase
- Return

E5071C Network Analyzer

1 Active Ch/Trace 2 Response 3 Stimulus 4 Mkr/Analysis 5 Instr State

Resize

Tr1 S11 smith (R+jX) scale 1.000U [F1]



1 Start 700 MHz IFBW 70 kHz Stop 1 GHz

Meas Stop ExtRef Svc 2013-05-13 10:56

- Format
- Smith (R+jX)
- Log Mag
- Phase
- Group Delay
- Smith R + jX
- Polar
- Lin Mag
- SWR
- Real
- Imaginary
- Expand Phase
- Positive Phase
- Return